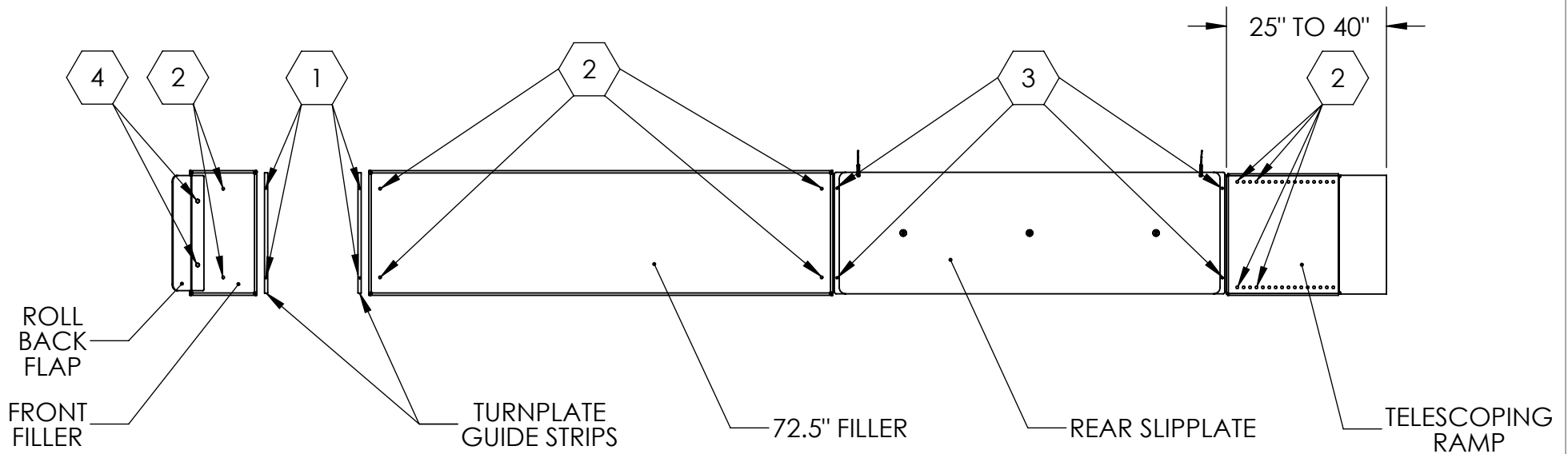


**ASSEMBLY INSTRUCTIONS:**

1. CLEAN RUNWAYS OF EXISTING DIRT & DEBRIS
2. LAYOUT DB-6000 KIT ONTO RUNWAYS & MARK MOUNTING HOLES
3. REMOVE DB-6000 KIT AND TOUCH-UP HOLES & SCRATCHES WITH PAINT
4. ALLOW PAINT TO DRY (SEE MANUFACTURERS RECOMMENDED INSTRUCTIONS)
5. BEGINNING AT THE END OF THE RUNWAY OPPOSITE THE RAMP, BEGIN INSTALLING DB-6000 COMPONENTS
6. AFTER ALL PARTS HAVE BEEN SECURED, RE-TIGHTEN ALL HARDWARE



**HARDWARE ARRANGEMENT**

|   |                |                                    |                       |                               |                        |
|---|----------------|------------------------------------|-----------------------|-------------------------------|------------------------|
| 1 | 1/4" HARDWARE  | 1/4-20 X 1 HEX HEAD CAP SCREW      | 1/4" USS FLAT WASHER  | 1/4-20 NYLON INSERT LOCK NUT  |                        |
| 2 | 3/8" HARDWARE  | 3/8-16 X 2-1/2 HEX HEAD CAP SCREW  | 3/8" USS FLAT WASHER  | 3/8-16 NYLON INSERT LOCK NUT  |                        |
| 3 | 5/16" HARDWARE | 5/16-18 X 1-1/2 HEX HEAD CAP SCREW | 5/16" USS FLAT WASHER | 5/16-18 NYLON INSERT LOCK NUT |                        |
| 4 | 1/2" HARDWARE  | 1/2-13 X 1-1/2 HEX HEAD CAP SCREW  | 1/2" USS FLAT WASHER  | 1/2-13 NYLON INSERT LOCK NUT  | 1/2" SPLIT LOCK WASHER |



**DB-6000**

**DB-6000 ASSEMBLY INSTRUCTIONS**

**PROPRIETARY AND CONFIDENTIAL**

THE INFORMATION CONTAINED IN THIS DRAWING IS THE SOLE PROPERTY OF QSP. ANY REPRODUCTION IN PART OR AS A WHOLE WITHOUT THE WRITTEN PERMISSION OF QSP IS PROHIBITED.

SCALE: 1:24